

Zoomax M5 HD PLUS

Handheld Video Magnifier

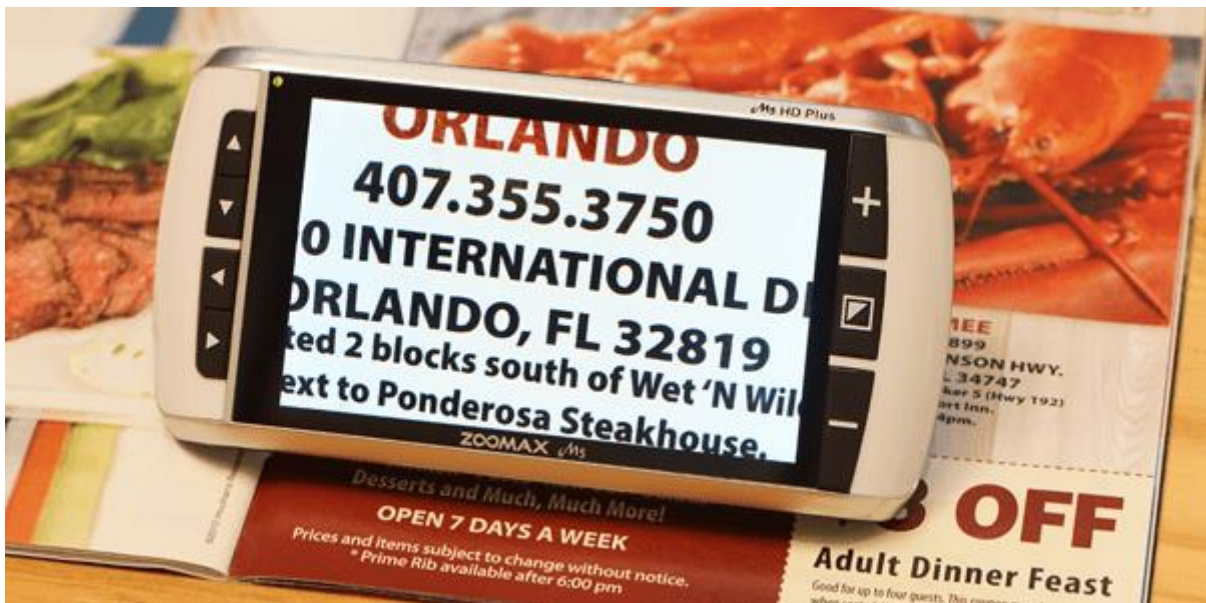


Zoomax M5 HD Plus is the latest 5" high definition handheld video magnifier, featuring compact design as well as easy access to abundant settings including image storage, distance view, and reading line & masks. Proven by full investigation and research of users' feedback for better user interaction, M5 HD Plus electronic video magnifier will make a change to your reading experience!

Description

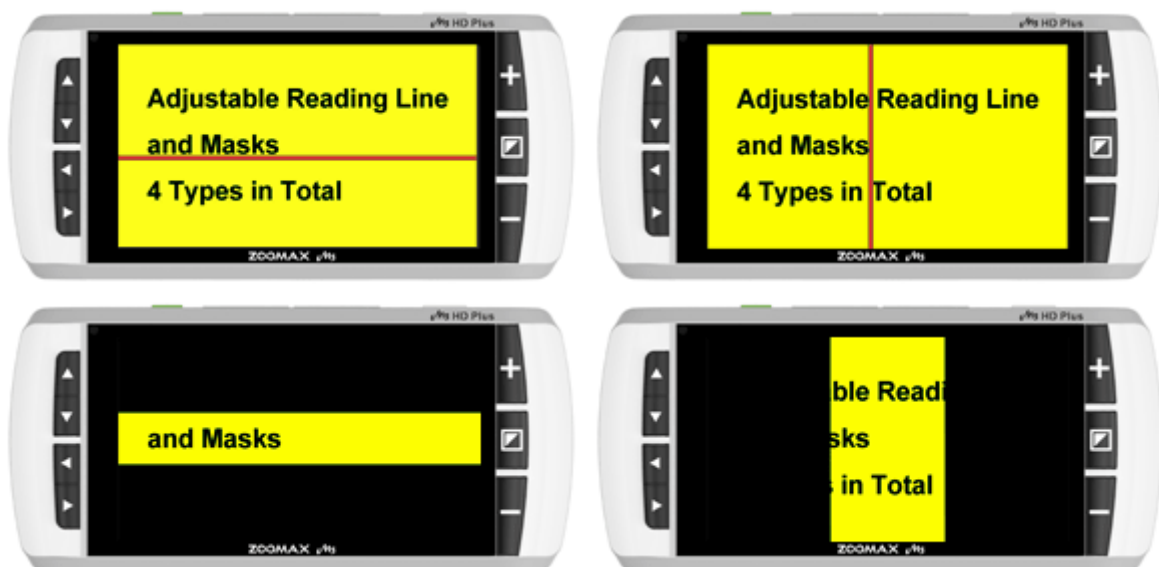
Internal Storage Of 60 Images:

M5 HD Plus offers storage of up to 60 images captured. Saved images can facilitate your record of reading materials, including books, photos, and some information you would like to share with others later. Just save, and check the images stored in your favourite way.



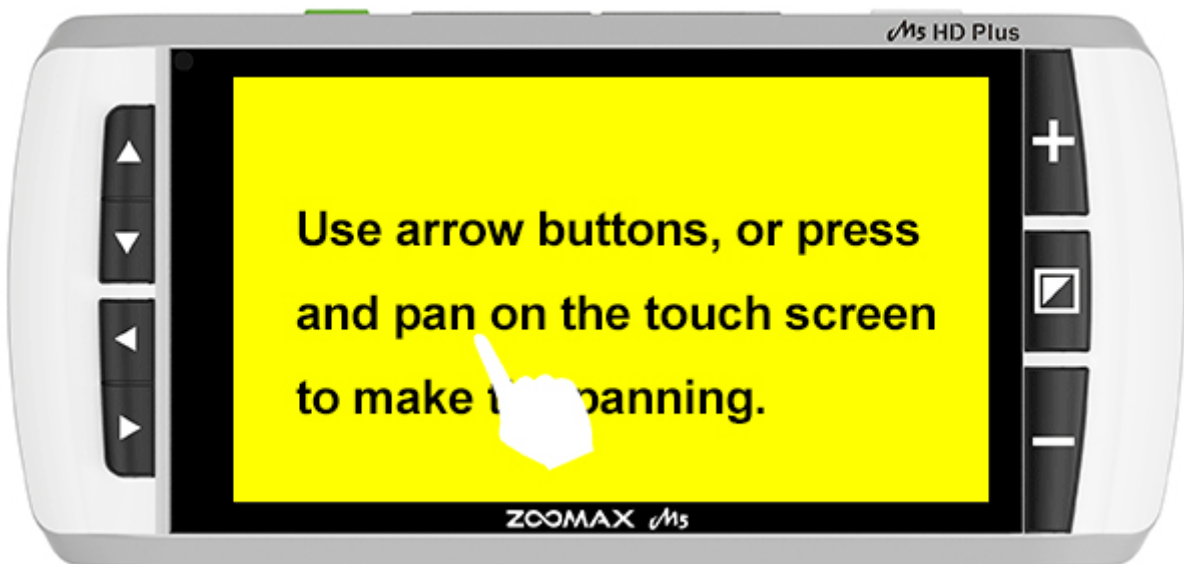
Adjustable Reading Line And Masks:

Reading line and masks will make a significant difference for people with some eye conditions leading to vision distortion. M5 HD Plus is one of the few handheld electronic video magnifiers preparing reading line and masks for people in need; adjustable reading line and masks, 4 types in total, will match diverse needs of various requirements easily.

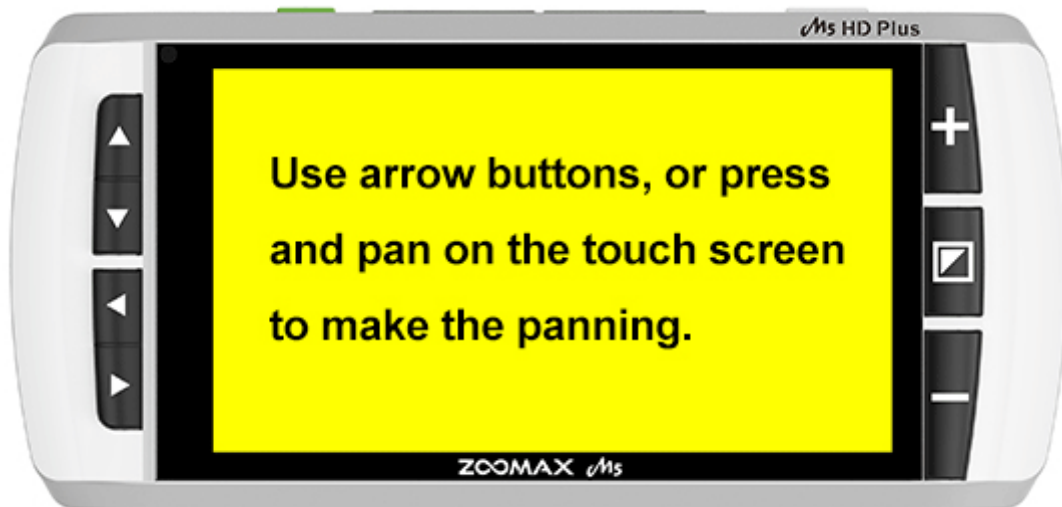


2-Way Panning Function

Panning enables the user to check every detail when the frozen image is zoomed in. Compared with panning settings of common CCTV magnifier, M5 HD Plus panning, through both physical buttons and sensitive touch screen, is more intuitive and handy. You can choose either way to achieve.



Press and pan on the touch screen to make the panning



Use the arrow button on the left side to shift the image

High Definition Image On High Settings

M5 HD Plus is equipped with two 5 megapixels cameras and 1280x720p screen technology to guarantee your catch of every single word even in the highest magnification. Just open the reading stand to place the device on newspaper, photos or magazines, and read with comfort easily.

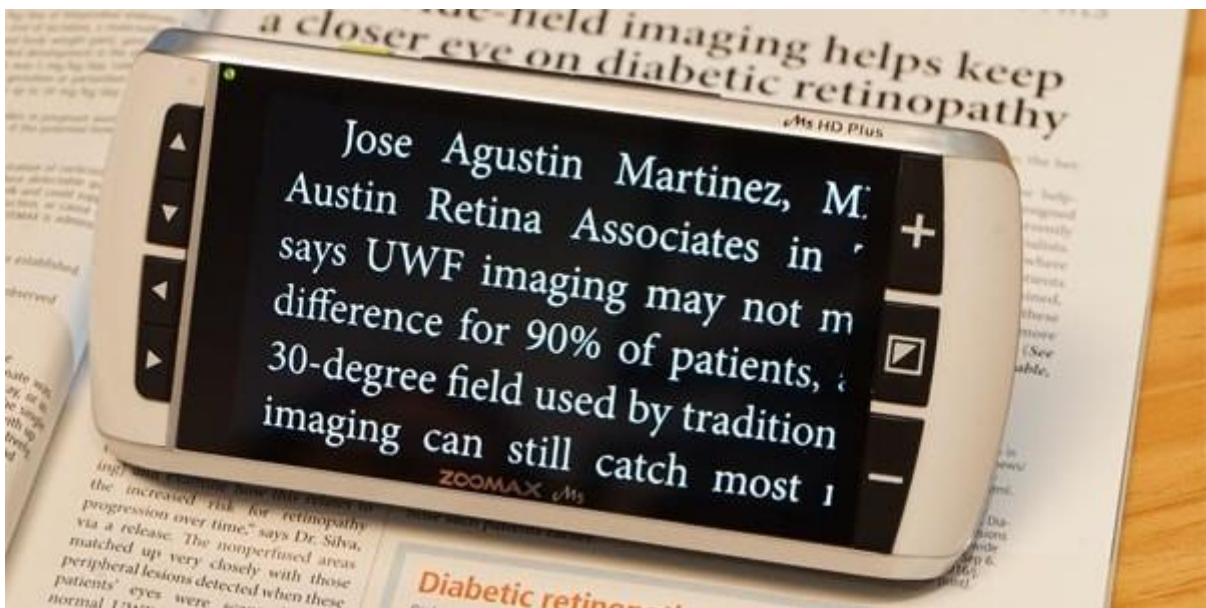


Camera:
5 megapixels

Screen:
1280x720p

Intuitive & Easy Operation

M5 HD Plus adopts explicit button design for intuitive use as well as integrated operation system with all functions accessible easily. Compared with video magnifiers requiring complicated manipulation, M5 HD Plus simply implements fewer combinations of buttons to achieve all the functions and adjustments, making the device easier to everyone with vision loss.



Other Traits You Expect

Distance view

M5 HD Plus distance view enables user to figure out farther object. The switch between close view and distance view is easy through reading stand. With the distance view function, it will never be difficult to see traffic information on the bus stop sign, signboard outside the restaurant, or any distant thing.



Ergonomic Handle (Standard Accessory)

M5 HD Plus handle designed based on prevailing usage patterns provides various holding angles for both left-handed and right-handed people in an ergonomic way.



SPECIFICATION

Features

- Up to 60 images storage
- 2-way panning (use arrow buttons, or press and pan on touch screen)
- 2 HD image quality
- Adjustable reading line and masks, 4 types in total
- Tactile buttons
- Distance view
- Favourite color modes
- Intelligently memorize the most recent settings (e.g. color mode, magnification, button beeps, brightness)
- Power saving after no operation in 3 minutes
- Connection to TV / Monitor through HDMI cable
- Reading Stand
- Tailored Handle (Standard Accessory)

Specification

Magnification	2.3x - 16x continuous magnification
Display Modes	Full color and 10 high contrast color modes
Focus	Tap-to-focus in distance view
Focus Note	Fixed focus in close view
Screen	5" widescreen TFT touch screen
Screen Resolution	1280x720p
Camera	Dual cameras 5 megapixels
Reading Line and Masks	Horizontal/vertical reading line & masks
Viewing Distance	4.8 cm for close view, >5 cm for distance view
Connection	Connection to TV / Monitor through HDMI cable
Power Saving	Turn off after 3 minutes nonuse
Battery	4h continuous use
Charging Time	4.5h
Weight	265 g / 9.35 oz.
Dimensions	173mm (L)* 80mm (W)* 20mm (D) / 6.8" * 3.1" * 0.8"

Power Adapter

Input 100 - 240V

Output 5V/2.5A

Operation and Storage Condition

Humidity < 70%

Temperature 10 – 40 °C

FOR ORDER OR INQUIRY CONTACT US HERE:

TARUN ENTERPRISES

An ISO 9001:2008 / 13485:2012 and CE Certified Company

8/8, Strachy Road,
Allahabad - 211001, India
Phone : 91 532 6590204
e-mail : info@optitecheyecare.com

A96/1, Second Floor
Phase II, Mayapuri Industrial Area
New Delhi - 110064
Phone : +91 11 47070362

URL : www.optitecheyecare.com



optitechofficial



+91 9335154556