

Direct Ophthalmoscope

Model: KJ8B

Features:

- High-Performance LED illumination with low maintenance cost, long LED and battery service lives, lifetime 10000 hours.
- Continuously variable light adjustment.
- Automatic safety shut-down after 180 seconds.
- Dust-proof.
- Aspherical condenser lens.
- Coaxial observational and illuminational light beams .
- Reflection-reduced view even with small pupils.

Specification

Diopter compensation:

Lens wheel with correction lens

The correction lens can be adjusted on the lens wheel:

Plus (D+) : 1-10 | 12 | 15 | 20 | 40







Minus (D-) : 1-10 | 15 | 20 | 25 | 30 | 35

The values can be read off in the illuminated field of view. Plus values are displayed in green numbers, minus values with red numbers.

Illumination form

Apertures with the aperture hand-wheel: Semi-circle, small/medium/large circular aperture, fixation star and slit.




Aperture Function

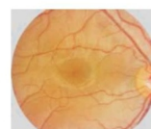
	Semicircle	for examinations with turbid lenses
	Small circle	to reduce reflections for small pupils
	Medium circle	to reduce reflections for small pupils
	Large circle	for normal examination results
	Light slit	to determine differences in level
	Fixation star	to ascertain central of eccentric fixation

Filters

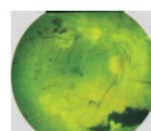
Using the filter wheel, the following filters can be switched for each aperture: Red-free filter, blue filter and polarisation filter.

Filter Function

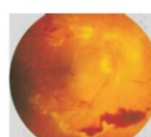
	Red-free filter	contrast enhancing to assess fine vascular changes, e.g. retinal bleeding
	Blue filter	for improved recognition of vascular abnormalities or bleeding, for fluorescence ophthalmology
	Polarisation filter	for precise assessment of tissue colours and to avoid retinal reflections



Healthy fundus



Fundus with red free filter



Pathological fundus



Lamp in the Head

Technical data: LED 3.5 V, 29 mA , average service life upto 20000 h

Battery

Li-on Battery

Power supply

AC 220V/50Hz or AC110V/60Hz

TARUN ENTERPRISES

H.O.: 8/8, Strachy Road, Prayagraj – 211001, U.P., INDIA
Phone: +91 - 8176080204, Email: info@optitecheyecare.com

B.O.: A96/1, Second Floor, Phase II, Mayapuri Industrial Area, New Delhi – 110064
Phone: 011-47070362, Email: delhi@optitecheyecare.com



www.optitecheyecare.com



+91 - 9335154556



OptitechOfficial



optitecheyecare



optitecheyecare